

AN ORDINANCE AMENDING THE GENERAL PLAN FOR SANITARY SEWER DISTRICT NO. 3 BY ADDING TERRITORY THERETO AND DECLARING AN EMERGENCY

WHEREAS, Sanitary Sewer District No. 3 was created for the benefit of the residents of such district; and

WHEREAS, the Village Engineer has filed an amendment to the general plan for Sewer District No. 3 by adding territory thereto; and

WHEREAS, the Clerk of Council has published, once a week for two consecutive weeks, a notice of the proposed amendment to Sewer District No. 3 pursuant to Revised Code Section 727.46.

NOW, THEREFORE, BE IT ORDAINED by the Council of the Village of Richfield, State of Ohio;

SECTION 1. Pursuant to Revised Code Sections 727.47 and 727.48 the general plan for Sewer District No. 3 be, and the same hereby is, amended to add territory thereto, a legal description of which territory has been prepared by the Municipal Engineer, is attached hereto as Exhibit "A" and incorporated herein fully as if by reference and is approved as so described.

SECTION 2. That the Clerk of Council be, and she hereby is, authorized and directed to keep a certified copy of the general plan for Sewer District No. 3, as amended herein, in her office open for public inspection.

SECTION 3. This Ordinance is hereby declared to be an emergency measure necessary for the immediate preservation of the public health, safety and welfare and for the further reason that the amendment of Sanitary Sewer District No. 3 is necessary to provide sewer service; wherefore, provided this Ordinance receives the affirmative vote of two-thirds of the members of Council elected or appointed, it shall take effect immediately upon its passage and execution by the Mayor; otherwise, it shall take effect and be in force from and after the earliest period allowed by law.

Passed: November 17, 1992

ATTEST:

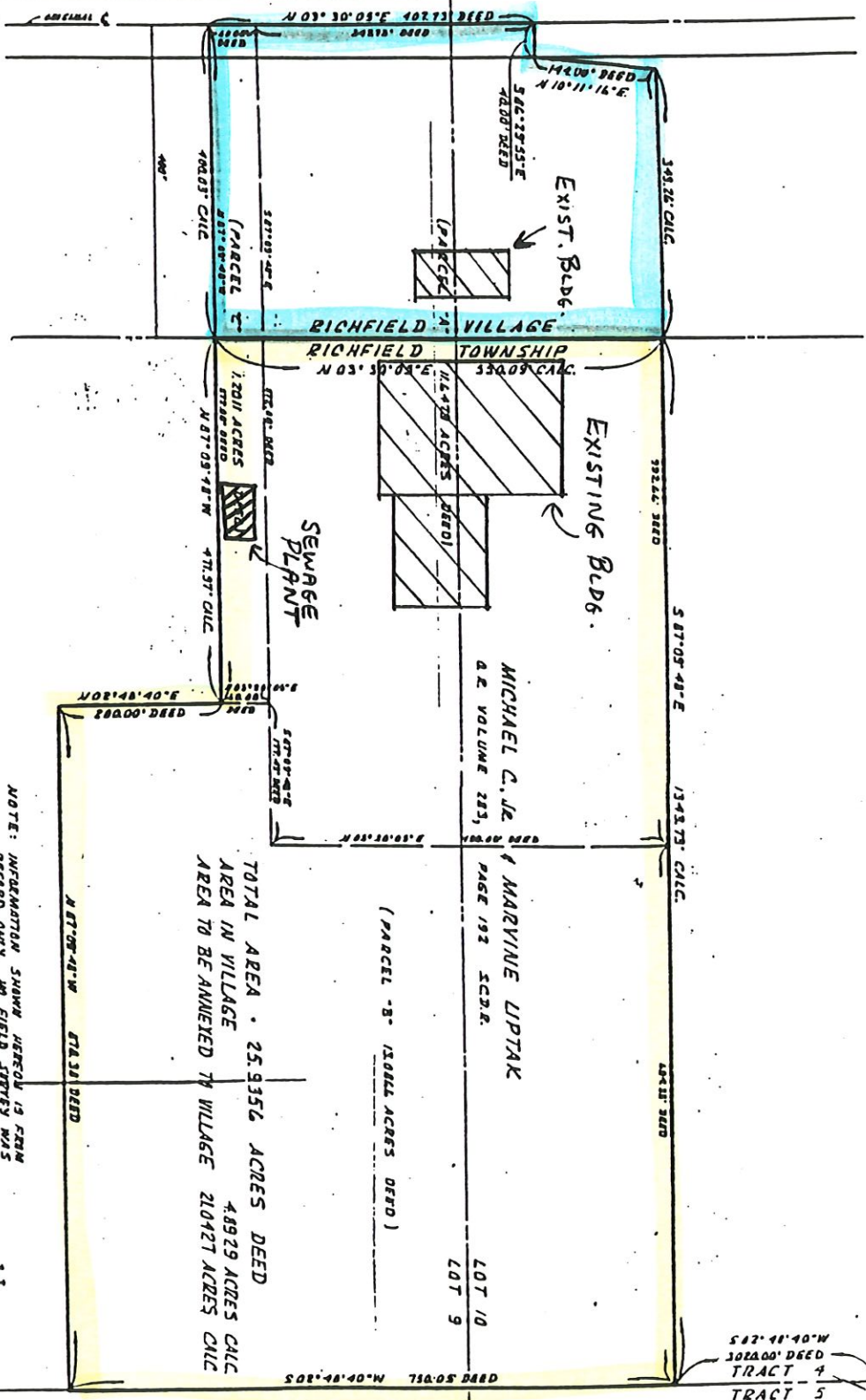
Peggy Malone
Clerk of Council

[Signature]
President of Council

[Signature]
Mayor

Dated: 11/17/92

CLEVELAND MASSILLON ROAD (RT. 21)



PREPARED BY:
 JOHN E. DAILEY
 REGISTERED SURVEYOR AT L.S.M.
 OF
 WHEELER & HELENA, INC.
 ENGINEERS - SURVEYORS
 915 KESWICK CIRCLE
 BROOKLYN HEIGHTS, OHIO 44131

MICHAEL C. JR. & MARVINE LIPTAK
 ANNEXATION
 PART OF LOTS NR. 9 & NR. 10 IN TRACT NR. 4
 RICHFIELD TOWNSHIP 210,427 ACRES
 TO RICHFIELD VILLAGE, COUNTY OF SUMMIT
 STATE OF OHIO.

AREA AFFECTED
 BY 12/8/81 VARIANCE.

NOTE: INFORMATION SHOWN HEREON IS FROM
 RECORD ONLY. NO FIELD CHECK WAS
 PERFORMED.

TOTAL AREA - 25.9352 ACRES DEED
 AREA IN VILLAGE 4.8929 ACRES CALC
 AREA TO BE ANNEXED TO VILLAGE 210,427 ACRES CALC

DATE: MARCH 14, 1991
 SCALE: 1" = 100'

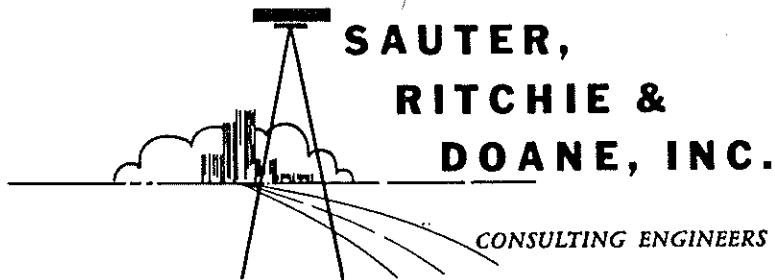
Property Assessed in Sewer Dist. #3

ANNEXED AREA

30-010-91



NOTICE: THIS PLAN
 IS A PART OF TRACT 4
 TRACT 5



1830 PORTAGE TRAIL
CUYAHOGA FALLS, OHIO 44223
(216) 929-2656

J. J. KNECHT, P.E.

Description of Sewer District No. 3

Beginning at a point at the centerline intersection of Brecksville Road and Everett Road;

Thence, westerly along the centerline of Everett Road and the south corporation line of the Village of Richfield, a distance of about 1194.32 feet to a point on the west line of lands now or formerly owned by J. W. Constantine, Jr.;

Thence, northerly along said J. W. Constantine, Jr. west line a distance of about 543.21 feet to a point;

Thence, easterly along said J. W. Constantine, Jr. north line a distance of about 88.21 feet to a point;

Thence, northerly along said J. W. Constantine, Jr. west line a distance of about 598.84 feet to a point;

Thence, easterly along said J. W. Constantine, Jr. north line and lands now or formerly owned by Richfield Truck Center, Inc. a distance of about 522.79 feet to a point;

Thence, northerly along said Richfield Truck Center, Inc. east line a distance of about 898.45 feet to a point in the centerline of Hart Road;

Thence, westerly along the centerline of Hart Road a distance of about 211.29 feet to a point;

Thence, northerly along the west line of lands now or formerly owned by Merry Co., Inc. a distance of about 694.16 feet to a point on the south line of Lot 7, Tract 3;

Thence, westerly along the south line of Lot 7, Tract 3 a distance of about 50.21 feet to a point;

Thence, northerly along the west line of lands now or formerly owned by M. & G. & J. Gallucci a distance of about 440.07 feet to a point on the centerline of Maple Drive;

Thence, easterly along the centerline of Maple Drive a distance of about 124.22 feet to a point;

Thence, northerly along the west line of lands now or formerly owned by Duff Warehouse, Inc. a distance of about 300.00 feet to a point;

Thence, westerly along said Duff Warehouse, Inc. south line and lands now or formerly owned by Alleghany Property Holdings, Inc. a distance of about 418.10 feet to a point;

Thence, northerly along said Alleghany Property Holdings, Inc. west line a distance of about 266.02 feet to a point;

Thence, westerly along said Alleghany Property Holdings, Inc. and lands now or formerly owned by Emil Pawuk & Assoc., Inc. south line a distance of about 3616.97 feet to a point on the west corporation line of the Village of Richfield;

Thence, northerly along the west corporation line of the Village of Richfield a distance of about 790.00 feet to a point on the south right-of-way line of Interstate 271;

Thence, northeasterly along the south right-of-way line of Interstate 271 a distance of about 4707.00 feet to a point on the centerline of Broadview Road;

Thence, northwesterly along the centerline of Broadview Road a distance of about 2285.00 feet to a point;

Thence, easterly along lands now or formerly owned by G. W. Rooney a distance of about 231.93 feet to a point;

Thence, northerly along the west line of lands now or formerly owned by G. E. Tishel a distance of about 296.16 feet to a point;

Thence, easterly along said G. E. Tishel north line a distance of about 805.21 feet to a point;

Thence, northerly along the west line of lands now or formerly owned by L. B. Shade, et al, a distance of about 432.72 feet to a point on the south line of Lot 2, Tract 3;

Thence, westerly along the south line of Lot 2, Tract 3 a distance of about 243.00 feet to a point;

Thence, northerly along the east line of Garden Forest Estates and the west line of land now or formerly owned by J. D. Brown and H. R. Bigadza a distance of about 1740.33 feet to a point;

Thence, westerly along the south line of lands now or formerly owned by V. F. Carter a distance of about 1228.22 feet to a point;

Thence, northerly along the west line of said V. F. Carter lands a distance of about 50.82 feet to a point;

Thence, northeasterly along the north line of said V. F. Carter lands a distance of about 642.84 feet to a point;

Thence, northerly along the north line of said V. F. Carter lands a distance of about 246.18 feet to a point;

Thence, easterly along the north line of said V. F. Carter lands a distance of about 503.58 feet to a point;

Thence, northerly along the west line of said V. F. Carter lands a distance of about 608.84 feet to a point;

Thence, northeasterly along the north line of said V. F. Carter lands a distance of about 479.72 feet to a point;

Thence, northerly along the west line of lands now or formerly owned by M. E. Bale a distance of about 398.41 feet to a point;

Thence, northeasterly along the north line of said M. E. Bale lands a distance of about 464.22 feet to a point;

Thence, northerly along the east line of lands now or formerly owned by R. L. and W. L. Kucharski a distance of 414.58 feet to a point on the centerline of Streetsboro Road;

Thence, easterly along the centerline of Streetsboro Road a distance of about 44.78 feet to a point;

Thence, northeasterly along the west line of lands now or formerly owned by M. Marfut a distance of about 202.27 feet to a point;

Thence, northwesterly along said M. Marfut south line a distance of about 67.10 feet to a point;

Thence, northerly along said M. Marfut west line a distance of about 624.05 feet to a point;

Thence, southwesterly along the south line of lands now or formerly owned by J. H. Boros and G. B. Novak a distance of about 407.00 feet to a point;

Thence, northerly along the west line of lands now or formerly owned by said J. H. Boros and G. B. Novak, Trustees Richfield, Township Cemetary, East Ohio Gas Co., C. C. Palmer and J. W. and H. Martin a distance of about 2450.00 feet to a point;

Thence, easterly along the north line of said J. W. and H. Martin lands a distance of about 498.36 feet to a point;

Thence, northerly along the west line of land now or formerly owned by J. W. and H. Martin, R. B. and O. I. Grupe, and W. H. and O. R. Ellis a distance of about 679.32 feet to a point;

Thence, easterly along the north line of said W. H. and O. R. Ellis lands a distance of about 455.89 feet to a point;

Thence, northerly along the west line of lands now or formerly owned by H. and B. W. Weitzel, Jr. and M. R. Hobart a distance of about 791.75 feet to a point on the centerline of Brush Road;

Thence, easterly along the centerline of Brush Road a distance of about 275.75 feet to a point;

Thence, northeasterly along the east line of lands now or formerly owned by D. M. Kouba a distance of about 562.95 feet to a point;

Thence, westerly along the north line of said D. M. Kouba lands a distance of about 542.36 feet to a point;

Thence, northerly along the west line of said D. M. Kouba lands a distance of about 140.00 feet to a point on the north corporation line of the Village of Richfield;

Thence, easterly along the north corporation line of Richfield Village a distance of about 50.00 feet to a point;

Thence, northerly along the west line of Lot 5, Tract 4 and the west corporation line of the Village of Richfield a distance of about 760.00 feet to a point;

Thence, easterly along the north line of lands now or formerly owned by H. F. Primosch a distance of about 1035.00 feet to a point on the west right-of-way line of Brecksville Road;

Thence, northeasterly along the west right-of-way line of Brecksville Road a distance of about 2650.00 feet to a point;

Thence, westerly along the south line of Lot 7, Tract 4, and of lands now or formerly owned by Metropolitan Park Board a distance of about 481.83 feet to a point;

Thence, northerly along the west line of lands now or formerly owned by Richfield Associates, R. W. and R. F. Forbes, B. J. Stubbins, Jr., Pinewood, Inc., a distance of about 1835.85 feet to a point;

Thence, easterly along the south line of lands now or formerly owned by J. Adams a distance of about 200.00 feet to a point;

Thence, northerly along the east line of said J. Adams lands a distance of about 400.00 feet to a point on the centerline of Brushwood Road;

Thence, westerly along the centerline of Brushwood Road a distance of about 250.00 feet to a point;

Thence, northerly along the west line of lands now or formerly owned by A. N. and R. J. Martella and R. J. and B. J. Likowski, the Cleveland Electric Illuminating Co., a distance of about 2270.00 feet to a point on the north right-of-way line of Interstate 77;

Thence, northwesterly along the north right-of-way line of Interstate 77 a distance of about 1497.68 feet to a point on the north corporation line of the Village of Richfield;

Thence, easterly along the north corporation line of the Village of Richfield a distance of about 2550.00 feet to a point on the East corporation line of the Village of Richfield;

Thence, southerly along the east corporation line of the Village of Richfield a distance of about 4130.00 feet to a point;

Thence, southerly along the east line of lands now or formerly owned by F. P. Raab; F. A. Ward, H. M. and S. L. Maynard, Century 21 of Ohio, Inc. and M. H. and D. A. Bowers, a distance of about 1510.00 feet to a point on the Richfield Village Corporation line;

Thence, westerly along the Richfield Village corporation line a distance of about 360.00 feet to a point;

Thence, southerly along the Richfield Village Corporation line a distance of about 6760.00 feet to a point on the north line of Hawthorne Estates;

Thence, westerly along the north line of Hawthorne Estates a distance of about 100.00 feet to a point;

Thence, southerly along the east line of lands now or formerly owned by Nero Realty & Co., Inc. a distance of about 147.80 feet to a point;

Thence, westerly along the north line of said Nero Realty & Co., Inc. lands a distance of about 125.00 feet to a point;

Thence, southerly along the east line of said Nero Realty & Co., Inc. lands a distance of about 292.41 feet to a point of the centerline of Hawthorne Road;

Thence, westerly along the centerline of Hawthorne Road a distance of about 125.00 feet to a point;

Thence, southerly along the east line of lands now or formerly owned by M. B. Leslye a distance of about 636.98 feet to a point;

Thence, easterly along the north line of lands now or formerly owned by C. J. Zak a distance of about 500.00 feet to a point;

Thence, southerly along the east line of said C. J. Zak lands a distance of about 150.00 feet to a point;

Thence, easterly along the south line of Hawthorne Estates a distance of about 1435.00 feet to a point on the west right-of-way line of Interstate 77;

Thence, southerly along the west right-of-way line of Interstate 77 a distance of about 790.00 feet to a point;

Thence, westerly along the south line of lands now or formerly owned by N. G. and R. N. Motz a distance of about 1192.0 feet to a point;

Thence, northerly along the west line of said N. G. and R. N. Motz lands a distance of about 143.40 feet to a point;

Thence, westerly along the south line of lands now or formerly owned by G. Kauf a distance of about 617.92 feet to a point;

Thence, southerly along the east line of said G. Kauf lands a distance of about 196.25 feet to a point;

Thence, southwesterly along the south line of said G. Kauf and E. A. & I. L. Ziss lands a distance of about 407 feet to a point;

Thence, southerly along the east line of lands now or formerly owned by S. E. Bellowe a distance of about 189.13 feet to a point on the center line of W. Streetsboro Road;

Thence, easterly along the center line of W. Streetsboro Road a distance of about 33 feet to a point;

Thence, southerly along the east line of lands now or formerly owned by S. E. Bellowe a distance of about 254.4 feet to a point;

Thence, easterly along the north line of lands now or formerly owned by E. C. Strodbeck a distance of about 125 feet to a point;

Thence, southerly along the east line of lands now or formerly owned by E. C. Strodbeck a distance of about 206.5 feet to a point;

Thence, easterly along the north line of lands now or formerly owned by M. M. Metz a distance of about 74.00 feet to a point on the east corporation line of the Village of Richfield;

Thence, southerly along the east corporation line of Richfield Village a distance of about 6595.00 feet to a point on the centerline of Wheatley Road;

Thence, easterly along the centerline of Wheatley Road a distance of about 230.00 feet to a point;

Thence, southerly along the east line of lands now or formerly owned by E. H. Greisinger a distance of about 697.94 feet to a point;

Thence, westerly along the south line of said E. H. Greisinger lands a distance of about 78.02 feet to a point;

Thence, southerly along the east line of lands now or formerly owned by J. D. and R. V. Shimek a distance of about 500.00 feet to a point;

Thence, easterly along the north line of lands now or formerly owned by the Bernard Pipe Line Co. a distance of about 2450.00 feet to a point on the west right-of-way line of Interstate 77;

Thence, southerly along the west right-of-way line of Interstate 77 a distance of about 1600 feet to a point on the north line of Richfield Estates;

Thence, westerly along the north line of said Richfield Estates a distance of about 2375.00 feet to a point on the east line of Block "A" of said Richfield Estates;

Thence, southerly along the east line of said Block "A" Richfield Estates a distance of about 925.32 feet to a point on the south line of said Richfield Estates;

Thence, easterly along the south line of said Richfield Estates a distance of about 2350.00 feet to a point on the west right-of-way line of Interstate 77;

Thence, southerly along the west right-of-way line of Interstate 77 a distance of about 1389.00 feet to a point on the north line of Richfield Heights;

Thence, westerly along the north line of said Richfield Heights a distance of about 2500.00 feet to a point on the west line of said Richfield Heights;

Thence, southerly along the west line of said Richfield Heights Lots 109, 27, 24, 23, 22, 21 and 20 a distance of about 1250.00 feet to a point;

Thence, easterly along the south line of said Richfield Heights Lot 20 a distance of about 134.8 feet to a point;

Thence, southerly along the east line of lands now or formerly owned by

A. and M. Goumas a distance of about 373.00 feet to a point on the centerline of Everett Road and the south corporation line of Richfield Village;

Thence westerly along the centerline of Everett Road and the south corporation line of Richfield Village a distance of about 798.8 feet to a point on the centerline of Brecksville Road and the place of beginning.

3-10-86
JJK:dk
SRD #1920

Revised 3-13-86 LW

EXHIBIT "A"

PARCEL IN LOTS NO.9 AND NO. 10, TRACT 4
RICHFIELD TOWNSHIP
TO BE ANNEXED TO THE VILLAGE OF RICHFIELD
(MICHAEL C., JR. AND MARVINE LIPTAK)

SITUATED IN THE TOWNSHIP OF RICHFIELD, COUNTY OF SUMMIT AND STATE
OF OHIO AND KNOWN AS BEING PART OF RICHFIELD TOWNSHIP LOTS NO. 9 AND LOT NO.
NO. 10, TRACT 4, AND MORE FULLY DESCRIBED AS FOLLOWS:

COMMENCING AT THE NORTHEASTERLY CORNER OF TRACT NO. 4 IN
SAID RICHFIELD TOWNSHIP;

THENCE SOUTHERLY ALONG THE EASTERLY LINE OF SAID TRACT 4
SOUTH 02° 48' 40" WEST, 3020.00 FEET TO THE PRINCIPAL PLACE
OF BEGINNING FOR THE PARCEL HEREIN DESCRIBED:

THENCE CONTINUING SOUTHERLY ALONG SAID EASTERLY LINE SOUTH
02° 48' 40" WEST, 750.05 FEET TO A POINT;

THENCE NORTH 87° 09' 48" WEST, 878.38 FEET TO A POINT;

THENCE NORTH 02° 48' 40" EAST, 200.00 FEET TO A POINT;

THENCE NORTH 87° 09' 48" WEST, 471.97 FEET TO A POINT ON THE
WESTERLY LINE OF RICHFIELD TOWNSHIP, SAID LINE ALSO BEING
THE EASTERLY LINE OF THE VILLAGE OF RICHFIELD;

THENCE NORTHERLY ALONG SAID WESTERLY LINE NORTH 03° 30' 05"
EAST, 550.09 FEET TO A POINT;

THENCE SOUTH 87° 09' 48" EAST, 1343.73 FEET TO THE PRINCIPAL
PLACE OF BEGINNING AND CONTAINING 21.0427 ACRES OF LAND, BE
THE SAME, MORE OR LESS, BUT SUBJECT TO ALL LEGAL HIGHWAYS

THIS DESCRIPTION WAS PREPARED BY JOHN E. DAILEY, REGISTERED
SURVEYOR NO. 5151 OF WHEELER & MELENA, INC., ON MARCH 18,
1991 FROM RECORD INFORMATION. NO FIELD SURVEY WAS PERFORMED.

Ord 49-1992

October 14, 1992

Akron Beacon Journal
Classified/Legal Adv.
Attention: Ms. Olga O'Neal

FAX NO. 996-3070

Dear Ms. O'Neal:

Please run the enclosed Legal Notice **once a week for two consecutive weeks.**

The Legal Notice should appear once on October 20, 1992 and once on October 27, 1992.

If you have any questions, please give me a call.

Sincerely,

May N. (Peggy) Malone
Clerk of Council
10/14/92

LEGAL NOTICE

Notice is hereby given that general plans for the Sanitary Sewer District of the Village of Richfield, District No. 3, heretofore created, have been prepared to amend the District as follows:

- (1) Including therein parcels owned by Michael Liptak, being Permanent Parcels 48-00029, 48-00661 and 48-00662.

which plans are now on file in the office of the Clerk of Council of the Village of Richfield for examination and inspection by interested persons, any objection thereto must be filed in writing with the Clerk on or before November 3, 1992.

By order of the Council of the Village of Richfield.

May N. (Peggy) Malone
Clerk of Council

Dated: October 20, 1992