

**A RESOLUTION AUTHORIZING AND DIRECTING THE MAYOR AND THE FINANCE DIRECTOR TO PURCHASE ONE ALAMO MACHETE 3 SRD50 MULCHER HEAD FROM AKRON TRACTOR AND EQUIPMENT, INC (SOURCEWELL CONTRACT NO A1 032525-AGI).; AND DECLARING AN EMERGENCY**

WHEREAS, this Council desires to authorize the Mayor and Finance Director to purchase one Alamo Machete 3 SRD50 Mulcher Head from Akron Tractor and Equipment, Inc. in an amount not to exceed \$49,020.00, pursuant to the quote of Akron Tractor and Equipment, Inc., attached as Exhibit A (Sourcewell Contract No. A1 032525-AGI);

WHEREAS, the Alamo Machete 3 SRD50 Mulcher Head will be ordered and purchased as part of the 2026 Capital Budget.

NOW, THEREFORE, BE IT RESOLVED by the Council of the Village of Richfield, County of Summit, State of Ohio that:

SECTION 1. The Mayor and Finance Director are hereby authorized to purchase one Alamo Machete 3 SRD50 Mulcher Head from Akron Tractor and Equipment, Inc. in an amount not to exceed \$49,020.00 (Sourcewell Contract No. A1 032525-AGI) in accordance with the proposal attached hereto as Exhibit A.

SECTION 2. Because this purchase is made through a governmental cooperative purchasing program (Sourcewell), pursuant to Section 141.03(f)(7) of the Codified Ordinances of the Village of Richfield, Council hereby waives all competitive bidding requirements that ordinarily apply to such transactions.

SECTION 3. It is found and determined that all formal actions of this Council concerning and relating to the adoption of this Resolution were adopted in an open meeting of this Council, and that all deliberations of this Council and of any of its committees that resulted in such formal action, were in meetings open to the public, in compliance with all legal requirements including Section 121.22 of the Ohio Revised Code.

SECTION 4. This Resolution is hereby declared to be an emergency measure for the reason that it is immediately necessary to execute the purchase agreement; wherefore, this Resolution shall take immediate effect, provided that it receives the requisite number of votes needed to pass as an emergency measure; otherwise, it shall take effect at the earliest date allowed by law.

PASSED: 1/20/26

  
President of Council

  
Mayor

Dated: 1/20/2026

ATTEST:

  
Clerk of Council

**AKRON TRACTOR & EQUIPMENT, INC.**  
1309 Collier Rd, Akron, Ohio 44320  
Telephone: 800-821-2785 or 330-836-0237  
Cell: 440-773-5800 Email: craig@akrontractor.com

December 5, 2025

Village of Richfield  
4410 W. Streetsboro Road  
Richfield, Ohio 44286

Following is a quote on the Sourcewell Alamo Contract Number AI 032525-AGI. Your member number is 39044.

One Alamo Machete3 SRD50 Cutting Head with 8" Diameter Cutting Capacity, Eighteen (18) Individual Carbide Fixed-Tooth Cubit Knife Cutting Tools which Grind Material into Mulch, Reinforced Drum, Cutting Width 50". Includes Pickup, Installation, & Delivery of your TS6.110 Tractor & Alamo Machete3 Boom Mower.

Sourcewell Contract List Price	\$44,797.00
<u>17% Alamo Sourcewell Discount</u>	<u>-\$7,616.00</u>
Subtotal	\$37,181.00
<u>Factory Freight to Akron, Ohio, Prep, &amp; Delivery</u>	<u>\$1,954.00</u>
Alamo Sourcewell Price	\$39,135.00

Alamo Quick Hitch Kit for Machete3 Boom and Two Cutting Heads, 60" Grass Flail and 50" SRD50 Head. Jack Stand for Heavy Duty 60" Grass Flail Mower Head. Includes all Hydraulic Quick Couplers and Hardware with Quick Coupler and Roller on the Attachments.


Sourcewell Contract List Price	\$10,360.00
<u>17% Alamo Sourcewell Discount</u>	<u>-\$1,762.00</u>
Subtotal	\$8,598.00
<u>Factory Freight to Akron, Ohio, Prep, &amp; Delivery</u>	<u>\$1,287.00</u>
Alamo Sourcewell Price	\$9,885.00

**TOTAL PRICE SRD50 AND QUICK HITCH KITS, INSTALLED** **\$49,020.00**

-Quote Good to 12/31/2025

-Estimated Delivery: 60 to 90 Days. Determined by Date of Order.

Akron Tractor & Equipment, Inc.

  
Craig Gorsuch, Sales

**SRD-50**<sup>TM</sup>

**ALVARO**  
INDUSTRIAL

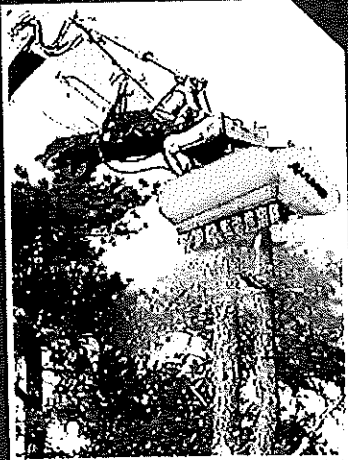
**BUILT SHARPER**<sup>®</sup>

An Alamo Group Company



# HIGH-TORQUE GRINDING POWER

## **SRD-50**<sup>TM</sup>



**8" Vegetation Diameter Cut Capacity**

**58" Overall Width**

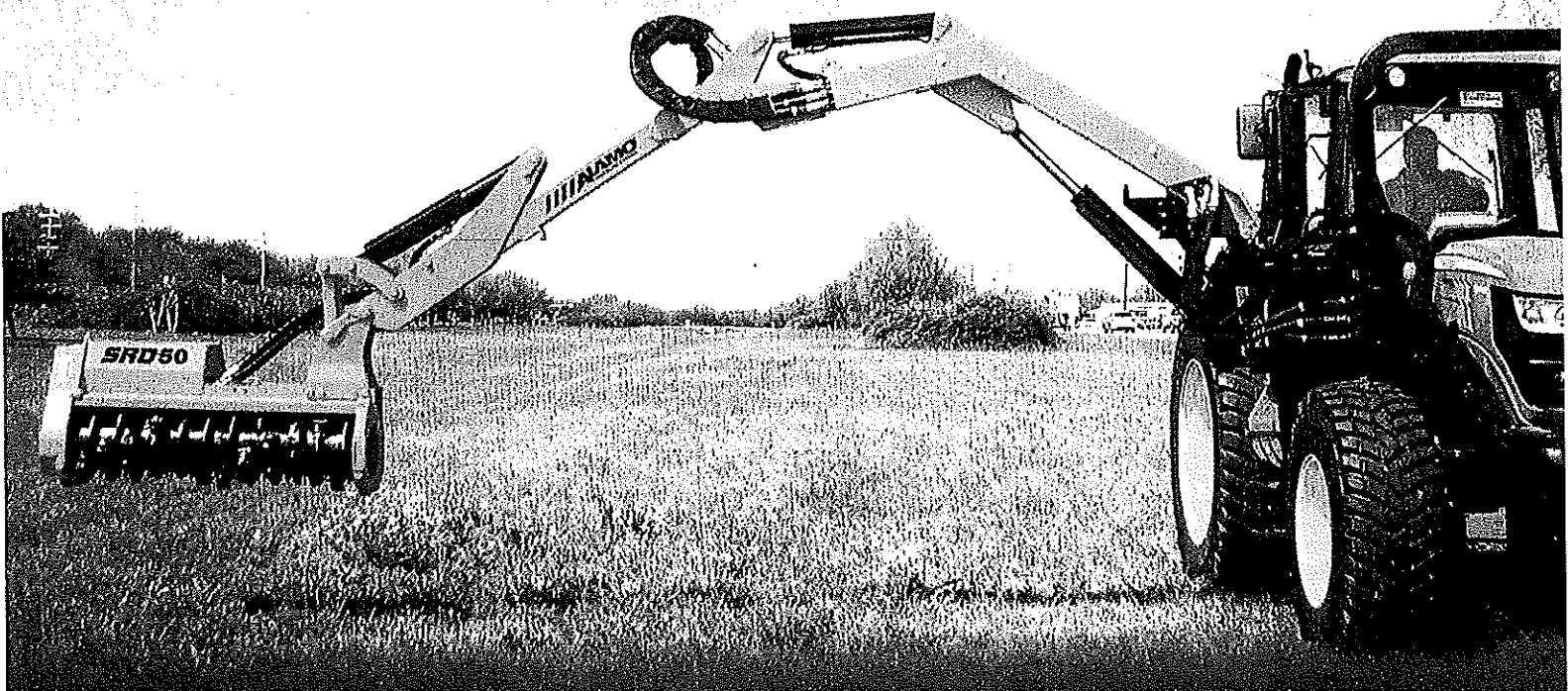
**50" Working Width**

**1,050 Lbs. of Equipment Weight**

**Fixed Tooth Style**

Reinforced Drum-Type w/Carbide Teeth

# SRD-50™



SRD-50, the newest addition to our available collection of specialty cutting heads for our Maverick™, Machete™ and Samurai™ boom series. The SRD-50 will tackle the toughest grass and brush material up to 8" in diameter. It is designed to cut growth and then efficiently grind material on the ground into mulch. The reinforced drum and carbide fixed-tooth design insures that it will deliver proven results.



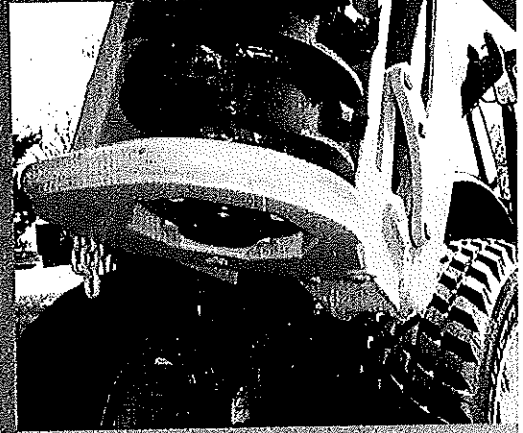
### HYDRAULIC

Variable displacement piston type hydraulic motor for smooth efficient power delivery.



### REINFORCED, SHARPENED

Reinforced, Hammermill cutting drum using 18 fixed carbide cutting tools. The drum has V-shaped holders that help support the cutting knives and protects against loosening.



### DURABILITY

Large 65mm spherical roller bearings in sealed, reinforced bearing housing. Gates Poly Chain GT Belt Technology for reliable, high-torque power transmission.



CuttingEdge Safety

T.M.O.S.T. Tractor Mower Operator Safety Training

This information is intended to be of a general nature only; specifications are subject to change without notice as we continue to improve our products. Warranty: Minimum one year parts and labor. Non-governmental users are subject to a modified policy. Only genuine Alamo Industrial parts may be used for warranty replacement. © 2018 Alamo Group Inc. Registered trademarks identified are property of Alamo Group Inc.

ALAMO INDUSTRIAL | 1-800-882-5762

WWW.ALAMO-INDUSTRIAL.COM

1502 EAST WALNUT ST. SEGUIN, TX 78155



## PRODUCT SPECIFICATIONS

# Alamo Industrial SRD50 Mulcher Head

It is the purpose of this specification to describe a hydraulically-powered boom attachment for mulching trees and brush type material along roadsides. The unit bid shall be the manufacturer's current production that meets or exceeds the minimum specifications.

### **Production Capabilities:**

Mulches brush/scrub growth, branches, and stumps up to 8" in diameter  
Material is mulched toward the ground providing safer operation utilizing the ground as an anvil

**Product Bid Recommendation:** Units that cut or slash parallel to the ground throw materials laterally (sideways) are not permitted and units that cut upwards are also not acceptable

Unit is capable of producing a finely shred mulch size material; a majority of shredded material will be 4" or less

### **Hydraulic Drive System:**

Unit is equipped with a variable displacement hydraulic piston-type motor  
Motor rated at 40 gpm @ 4000 psi.  
Motor drives the Hammermill drum using a cogged belt and pulley system utilizing a Gates Poly-Chain design for maximum durability

### **Dimensions:**

Unit will have a cutting width of 50"  
Unit will have an overall length of 58" or below  
Unit will have a maximum weight of 1050 lbs.

### **Hammermill Drum and Tooling (Spilt ring design):**

The Hammermill drum has a .50" wall thickness with steel tool holders welded in a staggered pattern throughout the drum. Standard cubit knife tools must be less than 2" tall and must fit the "v-shape" interface of the holder with through bolt design. Rotor tip-to-tip diameter must be a maximum of 14.5". The combination of wall thickness, drum diameter, and tip-to-tip diameter provide rotating mass and energy for effective mulching performance and rotor durability. Units using a different combination of these elements must demonstrate how they will provide comparable inertia and durability. The Hammermill Drum unit must be equipped with 18 individual cutting tools throughout the rotor. Each cubit knife cutting tool must be through bolted into holders by a single 1/2" grade-8 hex bolt and grade-8.5 nut.

**Product Bid Recommendation:** Units containing tools that cannot be individually changed, that hold tools in place on rods, or that allow tools to swing on rods are not accepted. These machines cannot effectively shred into the ground and are susceptible to excessive wear and additional labor costs to change tools

Cubit knife cutting tools are forged with an inward "v-shape" that interfaces with the tool holder and accurately positions the tools

Cubit knife cutting tools are proven to last in excess of 125 hours.

The drum features bolt-on stub shafts that must be forged and heat-treated

The drum rotates on 65mm spherical roller bearings with well-sealed bearing housings

### **Cutter Head Construction:**

Mulcher body is powder coated Texas Yellow with Sherman Willams Powdura Polyester (TGIC-Free) Powder Coating

### **WARRANTY:**

One year parts and labor. Non-Governmental users may be subject to modified policy.

